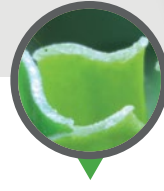



TURF AND IVY
 SOLUTIONS
*It makes **sense.***



LUMI PEARL

USES


- ▶ Landscape
- ▶ Lawns
- ▶ Playgrounds
- ▶ Traffic Medians
- ▶ Pet Areas
- ▶ Commercial or Residential
- ▶ Light-Heavy Traffic

S-SHAPE BLADE

SPECIFICATIONS

Pile Height:	1-3/4"
Turf Gauge:	3/8"
Face Weight:	90 oz./yd ²
Backing Weight:	22 oz./yd ²
Total Weight:	112 oz./yd ²
Stitch Rate:	20.5/10cm
Stitches/M ² :	21525
Material/Dtex:	PE10000 + PP4400
Color:	Emerald Green and Olive Green with Brown and Green Thatching
Type Of Fiber:	PE monofilament and PP Curled As Thatch
Infill Amount:	1.0 lb./psf.
Primary Backing:	Premium T&I Backing
Tuft Bind:	13+ lb/force (ASTM D1335)
Blade Type:	S-Shape Blade
Permeability:	88.1 inches/hr. (ASTM F1551)
Melting Point:	176 °F (ASTM D2859)
Grab Tear MD:	>200 lb./force (ASTM D5034)
Grab Tear CMD:	>200 lb./force (ASTM D5034)
Roll Width:	15 ft
Roll Length:	75 ft
Sq. Ft. Per Roll:	1125
Total Roll Weight:	860 lbs

 15 Year Manufacturer's Warranty
8 Year Manufacturer's High Traffic Warranty

 Flo-Rite Drainage Technology

